

Issue 27

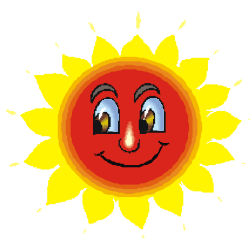
Summer 2010



RYDER-CHESHIRE VOLUNTEERS VALE OF WHITE HORSE BRANCH



a pathway to
leisure &
learning for
disabled
people



*If you would like to
receive this newsletter
in a different format or
not at all, then please
contact Carol.*

Ryder-Cheshire Volunteers

Vale of White Horse Branch

Welcome to our Summer Newsletter for 2010

Summer seems to have arrived with sunshine everywhere,
let's hope it lasts!!

Unfortunately, the Canal Trip on 6th May was cancelled.

The first Annual General Meeting for Vale of White Horse Branch took place on
13th May, thank you to all those who attended.

The Pub Lunch at The Lord Nelson in Wantage was on 17th May & was
enjoyed by 15 people.

Afternoon Tea at Chilton Garden Centre on 16th June was attended by 13
people, we all had a lovely time with lots of scones & cream.



Our former Chief Executive & Co-founder
of RCV in 1986, Sylvia Wear, has been
awarded an OBE in the Queen's
Birthday Honours List.
Many congratulations to Sylvia for this
much deserved award.

DATES FOR YOUR DIARY

Monday 19th July—Pub lunch at The White Horse in Abingdon 12 noon

Friday 3rd September—Chinese Cookery eve Wantage

Monday 20th September—Pub Lunch at The Lord Nelson
in Wantage 12 noon

Friday 1st October—merger of Oxfordshire branches

Monday 15th November— Pub Lunch at The Boundary
House in Abingdon 12 noon

Saturday 18th December—Xmas Lunch in Wantage

Could you sponsor this newsletter!
Contact Carol if you can help us.

Newsy Bits

Sad News—Sylvia, one of our long standing members, very sadly passed away at the end of March, she will be greatly missed by her volunteers, Delia & Ronnie, & all at RCV.

For Sale - a desktop PC & an electric typewriter, contact Carol for more details.

We would like to welcome 3 new members, Suzanne, Janet & Linda have joined us in the last few months.

There were no takers for painting for the Xmas Cards, so we will ,unfortunately, not be making any.

Driving Instructor specialising in disabled drivers tel:01865 321612 mob:07789 777487 email:learn@draytonsom.co.uk

We would like to welcome a new volunteer, Lee, who has recently joined us.

Eye tests can be carried out in your own home by The Outside Clinic, tel: 0800 854477

If you are purchasing anything online from Amazon, RCV can benefit if you enter via our website www.rcv.org.uk

The Giving Machine is another site that can also be accessed through the RCV website www.rcv.org.uk & RCV will benefit.

If anyone has any knitting wool, any amount, any ply, any colour that they do not need, I would be grateful to receive it for knitting blankets for charity.

35 Ock Street in Abingdon is a café next to the Baptist Church where disabled people are especially welcomed by the lovely staff there. Some of our volunteers work there, so you may meet someone you know.

We have 2 new pairings Jo/Jen & Philippa/Lucy are now enjoying each other's company.

Moira, one of our long standing members, has written a piece for the MND (Motor Neurone Disease) Newsletter recommending RCV. Thanks for that Moira, we need all the publicity we can get so that our name becomes better known out there.

There is a generic course (for those with long term health condition) running at the East Oxford Community Centre in Princes St. Oxford, on Monday afternoons 1.30pm—4pm until 12th July. Contact 0800 988 5520 for more info.

If any of you are collecting used postage stamps for RCV, please let me know & I will call around to collect them. If you are not collecting them, then please start!!

www.arthurrankcentre.org.uk/projects/computers_for_rural_people is a useful website for PCs for rural members & charities.

Doorstep Crime/Rogue Traders—Oxfordshire Trading Standards Service has produced a leaflet warning us about rogue traders on our doorsteps tel: 0845 051 0845 email: trading_standards@oxfordshire.gov.uk for a list of reliable tradesmen.

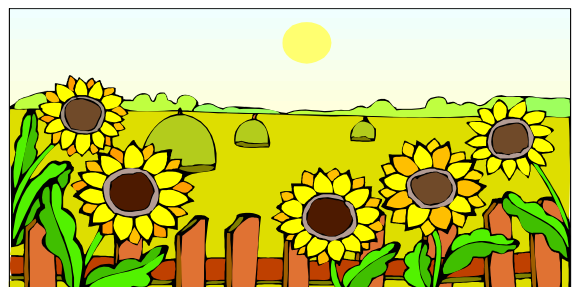
RCV (VWH) does not endorse any of these services, but hopes that the information may be of interest to you

RCV Oxfordshire

From 1st October 2010 all the branches of RCV in Oxfordshire will merge & will be known as RCV Oxfordshire.

This is mainly due to costs & Oxfordshire County Council funding. There will be a change of address & phone number for VWH, which will be advised later.

Nothing else will change & it is hoped that, due to this amalgamation, RCV will be able to reach more people in Oxfordshire & be able to work more efficiently.



Carol Johnson, Co-ordinator, Vale of White Horse Branch , Ryder-Cheshire Volunteers, Harwell Innovation Centre,
173 Curie Avenue, Harwell OX11 0QG tel: 01235 838550 email: carol.johnson@rcv.org.uk website: www.rcv.org.uk